

BI-36F/S



FEATURES

- Monitor and control remotely with Wi-Fi connectivity
- Locks in cold air to ensure freshness with magnetic door seals
- Controls temperature within one degree of setpoint
- Filters ice, removing contaminants, chlorine taste, and odor
- Yields ice automatically and "max ice" for additional production
- Ensures excellent visibility with bright lights

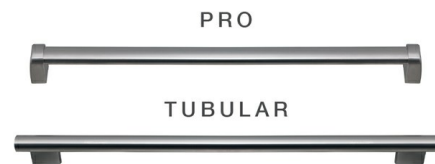
ACCESSORIES

- 90° Door Stop
- Legacy 45 3/16" Pro Handle
- Legacy Dual Install Kit with 72" Pro Louvered Grille
- Legacy Dual Installation Kit
- Legacy Dual Installation Kit with 66" Pro Louvered Grille
- Legacy Grille Frame - 84"
- Legacy Stainless Steel Kickplate - Left Hinge
- Legacy Stainless Steel Kickplate - Right Hinge
- Legacy Stainless Steel Pro Louvered Grille - 84"
- Legacy Stainless Steel Side Panel
- Legacy Tubular Handle
- Stainless Steel Pro Louvered Grille - 83"
- Stainless Steel Pro Louvered Grille - 88"
- Water Filter
- White Side Panel
- Dual Installation Kit with Dual Wide Grille
- Stainless Steel Pro Handles
- Stainless Steel Tubular Handles

Accessories are available through an authorized dealer.
For local dealer information, visit subzero-wolf.com/locator.



HANDLE OPTIONS



PRODUCT DETAILS

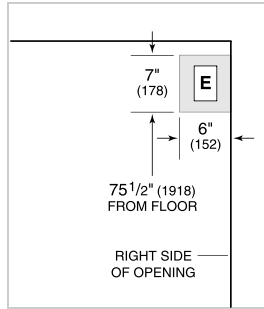
FREEZER

- LED freezer lights
- 4 stainless-steel freezer shelves (3 adjustable; 1 stationary)
- 3 storage drawers with adjustable dividers
- 5 adjustable door bins
- Automatic ice maker with removable ice container

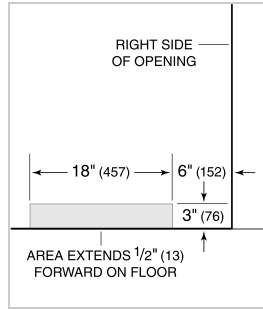
PRODUCT SPECIFICATIONS

Model	BI-36F/S
Dimensions	36"W x 84"H x 24"D
Freezer Capacity	22.6 cu. ft.
Electrical Supply	115 VAC, 60 Hz
Electrical Service	15 amp dedicated circuit
Plumbing Supply	1/4" OD copper, braided stainless steel or PEX tubing
Plumbing Pressure	35–120 psi
Receptacle	3-prong grounding-type

ELECTRICAL

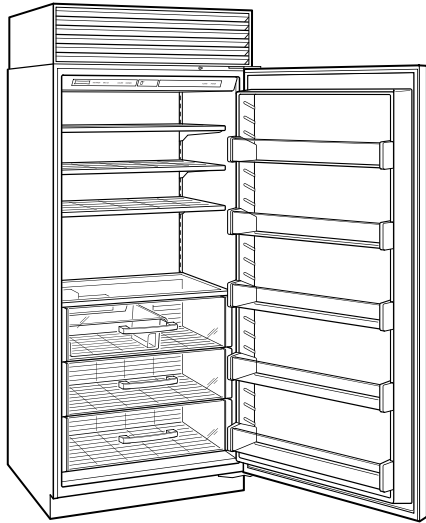


PLUMBING



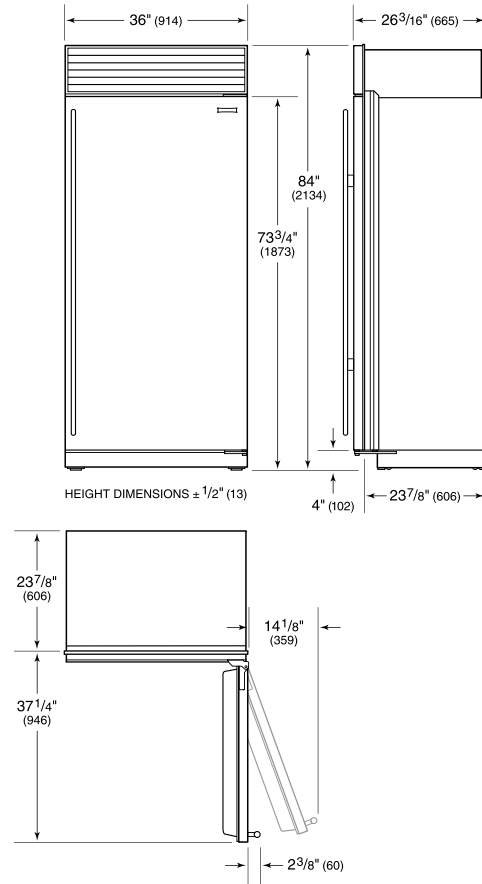
NOTE: Dimensions in parenthesis are in millimeters unless otherwise specified

INTERIOR VIEW

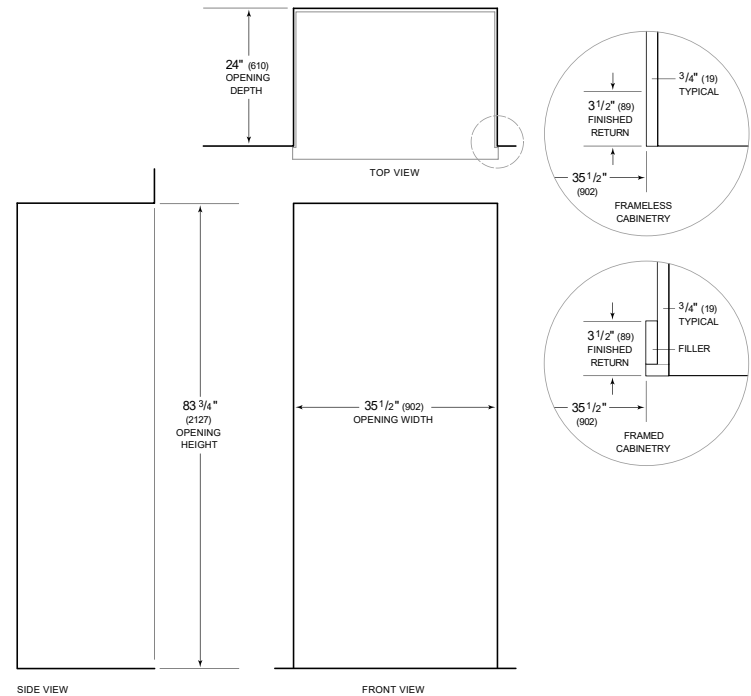


This illustration is intended for interior reference only and may not represent the exterior of the model being specified.

DIMENSIONS



STANDARD INSTALLATION



NOTE: 3 1/2" (89) finished returns will be visible and should be finished to match cabinetry. Shaded line represents profile of unit.