

## DSRH - DSLH (4200331,2) - Door Stop Kit - Top Mounts Only

**NOTE:** To be used on models 201R, 201FD, 2011ICE, 501R and 501F. To be used on refrigerator doors only on models 211RFD, 241RFD, 251RFD, 251RFD, 550 & 511

**NOTE:** Read instructions carefully! Instructions are to be followed as listed. We suggest checking off procedures that are completed before proceeding to next step.

**NOTE:**The kits listed are to be installed on top of refrigerator and/or freezer door that need to be mechanically stopped at either 90° or 100° only.

### CONTAINS:

Ref #	QTY	DESCRIPTION	Ref #	QTY	DESCRIPTION
1	1	Door Stop Template (1 hole-Cabinet)	10	1	Top Door Hinge Assembly - LH
2	1	Door Stop Template (3 hole-Door)	11	2	Bolt, #10-24 x 1/2 FT HD UC
3	1	Short Arm Hex Key, 3/16 x 2-3/4	12	1	Bolt, 1/4-20 x 1 PH FL HD
4	1	Thread-Section Installation Tool	13	1	Machine Screw, 1/4 x 20 x 1-1/2 Hex HD
5	1	Threaded Door Stop Bushing - Cabinet	14	1	Cap Screw, 1/4-20 x 1-1/2 Hex HD
6	1	Threaded Door Stop Bushing - Door	15	2	Blind Threaded Insert, 1/4 x 20
7	1	Door Stop - Slide	16	1	Screw, #8-15 x 3/8" Truss HD
8	1	Top Cabinet Hinge Cover - RH	17	1	Lock Washer, 1/4 S.S.
8	1	Top Cabinet Hinge Cover - LH	18	1	Nylon Washer, 1/4
9	1	Door Stop Hinge - RH - Top	19	1	Door Stop
9	1	Door Stop Hinge - LH - Top		1	Instructions
10	1	Top Door Hinge Assembly - RH			

**TOOLS REQUIRED:**

- Portable Drill	- 1/4" Drill Bit	- 1/2" Wrench or Crescent Wrench
- 3/8" Drill Bit	- Phillips Screwdriver	- Straightedge Screwdriver
- 5/32" Drill Bit		

### PROCEDURE 1: THREAD INSERT AND DOOR STOP TO DOOR

1.

#### ⚠ CAUTION

*Pull product six inches out of current installation, to access top main frame of product. Remove top grille assembly (if applicable).*

- Carefully remove complete door assembly, which stop kit is to be installed.
- Place 3-holed door template (#2) against existing top door hinge with flange of template hooked over back edge of top door trim (See ill. 1).
- NOTE:** The inside hole (nearest door hinge) is for a 100° door stop; the center hole is for a 90° door stop.
- With template aligned, drill 5/32" pilot hole followed by a 3/8" finished hole in appropriate hole (See ill.1).
- Place blind threaded insert (#15) in 3/8" drilled hole in door with threads facing down. To secure insert, place 1/4" cap screw (#14) through wrench holder (See ill. 3).
- Expand by turning 1/4" cap screw clockwise while holding wrench holder in place with a 1/2" wrench (not included). This will leave insert permanently intact in door.
- Fasten door stop to top of door. With flange portion up, secure bolt through door stop bushing (#6) into installed insert (See ills. 2 & 4). **NOTE:** A nylon washer (#18) can be used for clearance purposes

### PROCEDURE 2: DOOR HINGE

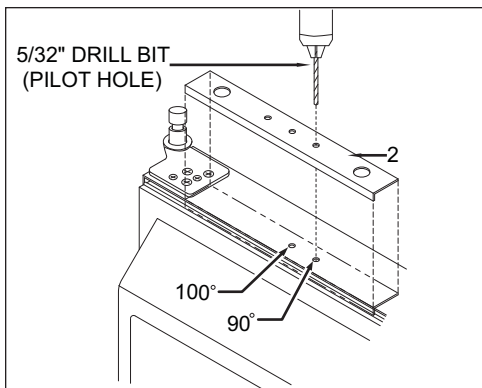
- Remove existing door hinge assembly by removing hinge screws.
- Install new top door hinge (#10) by using original five screws. **NOTE:** It may be necessary to discard the two smaller shipment screws for proper door adjustment.
- Position door on cabinet and make all adjustments at this time.



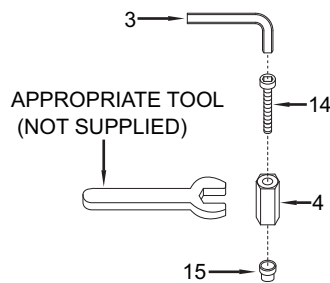
4. When properly adjusted, drill two new 5/32" holes into end portion of new door hinge (See ill. 2).
5. Insert enclosed #10 self-tapping screw and tighten in two 5/32" holes into end of new door hinge.

**PROCEDURE 3: STATIONARY STEP TO TOP OF MAINFRAME**

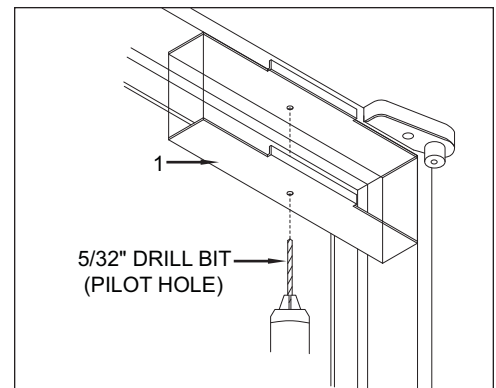
1. Place single holed template (#1) on main frame with flange end hooked over edge of top main frame (See ill. 5).
2. Drill 5/32" pilot hole followed by a 1/4" finished hole.
3. Fasten slide bar (#7) to hole drilled into top main frame extrusion. Place threaded brass bearing into bottom of slide bar with flange of slide bar slopping down. Next, install machine screw (#13) with 1/4" lock washer (#17) through top of main frame extrusion. Then attach to bottom side of main frame extrusion with threaded brass bearing and tighten down (See ill. 2).
4. Apply a small amount of grease or white lithium to the bearing surface.
5. Test door by opening. It should stop at either 90° or 100°, depending on what type of stop that was installed (See ill. 6). If not, please re-read instructions and make necessary corrections.



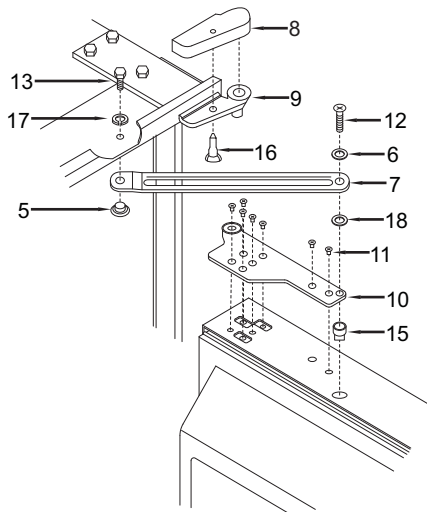
**Illustration 1**



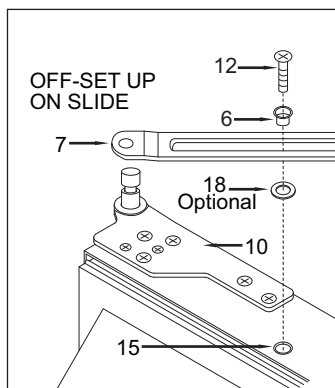
**Illustration 3**



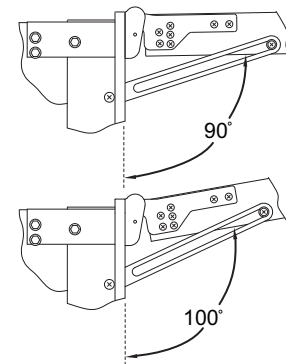
**Illustration 5**



**Illustration 2**



**Illustration 4**



**Illustration 6**

